

## E600 Series 3 1/4" Frame Depth Project-In (Hopper)

### E600 SERIES PROJECT-IN

#### FEATURES

- ◇ Commercial Framing System
  - 3 1/4" main frame
  - 0.094" wall thickness of interior and exterior walls, 0.078" wall thickness elsewhere
- ◇ Thermally Enhanced Design
  - Azon pour and debridge thermal break is 1/2" wide in all main frame and vent rail extrusions
  - Assembled with heavy duty Monticelli cast aluminum corner keys
  - Mitered and pressure sealed internally with injected silicone through corner key passages. Wrap-around marine glazing
- ◇ Glazing
  - 1" insulated glass
- ◇ Hardware
  - Butt hinges or 4-Bar hinges
  - Low profile cam handle
  - Pole Operated handle
  - Custodial lock
- ◇ Screen
  - Extruded aluminum screen frame with BetterVue™ mesh with Watershed® technology

#### OPTIONS

- ◇ Available Configurations
  - Project-in hopper
- ◇ Muntin Choices
  - Internal or simulated divided lites available
- ◇ Limited travel hardware
- ◇ Nailing Fin
- ◇ Screen
  - Extruded aluminum screen frame with aluminum wire mesh
  - Extruded aluminum screen frame with sunscreen mesh
  - Extruded aluminum screen frame with stainless steel 0.009" thickness mesh
- ◇ Glazing
  - Multiple Low-E and argon glazing choices
  - Capillary tubes
  - Optional glazing stop to accept 1 3/8" (triple) glazing
  - Wide variety of glazing, tinting and thickness options
- ◇ Panning & Trim Choices
  - Wide variety of panning, receptor and trim available
- ◇ Mulling
  - Wide variety of structural mulls

#### BENEFITS

- ◇ The capacity to match exterior colors for unique project facades
- ◇ The ability to facilitate large sizes for taller and wider window openings

#### PERFORMANCE

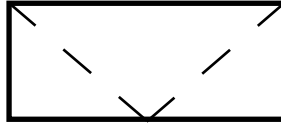
- ◇ Structural & Thermal (test reports or thermal simulations available upon request)

Model	E600 Project-In (Hopper)
Test Size	60" x 36"
NAFS Rating	AW-PG70
Structural Load P.S.F.	105.26
Air at 50 MPH (cfm/ft²)	0.03
Water (No Penetration) P.S.F.	12.11
U-Value (ranges based on multiple Low-E/Argon combinations)	0.26-0.37
SHGC (ranges based on multiple Low-E/Argon combinations)	0.10-0.41

Operating Force: 12 lbf (maintain motion), 9 lbf (latches)

Our products are tested to the standards of and certified by some of the foremost organizations in the fenestration industry.

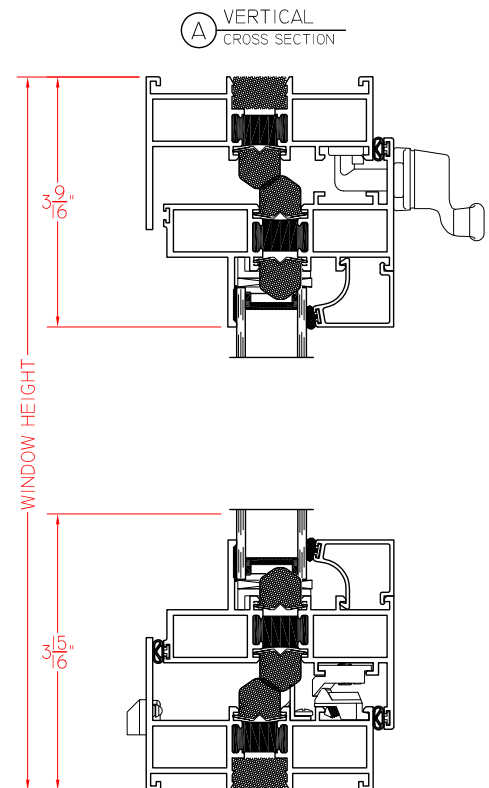
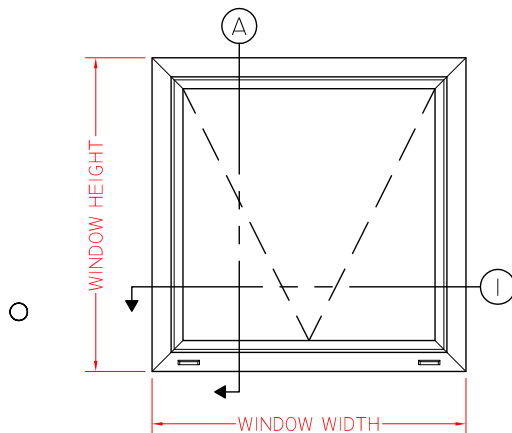
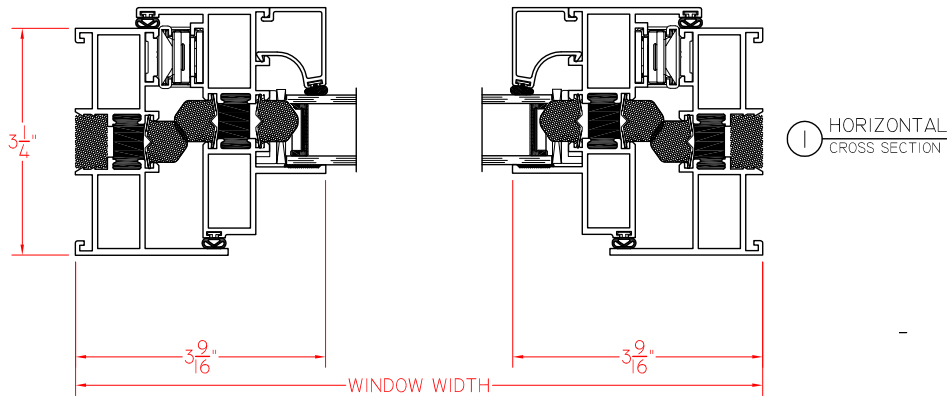




# E600 Series 3 1/4" Frame Depth Project-In (Hopper)

## E600 PROJECT-IN

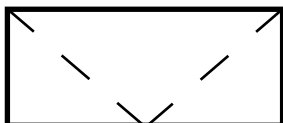
This document contains confidential and proprietary information intended for the private use of Quaker.  
© 2016 Quaker Window Products Co., INC. All rights reserved.  
Quaker reserves the right to change any/all designs without notice. Due to periodic re-certification requirements, result shown may vary.

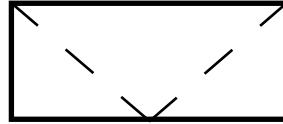


SCALE 1:2

Our products are tested to the standards of and certified by some of the foremost organizations in the fenestration industry.



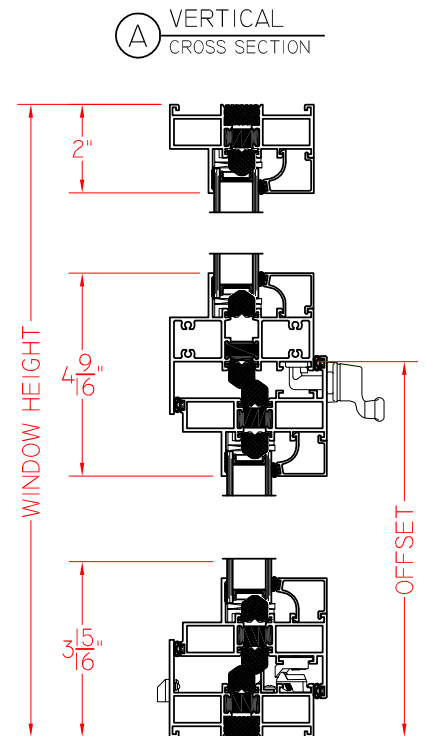
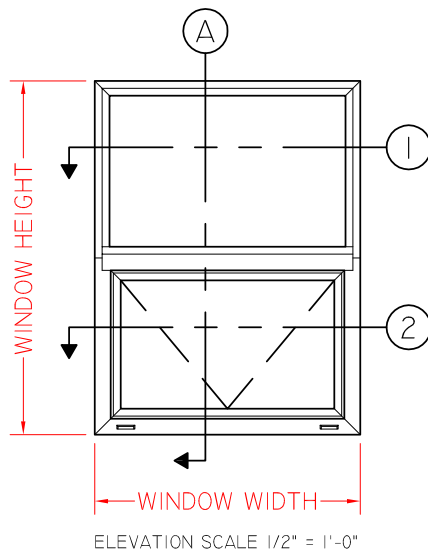
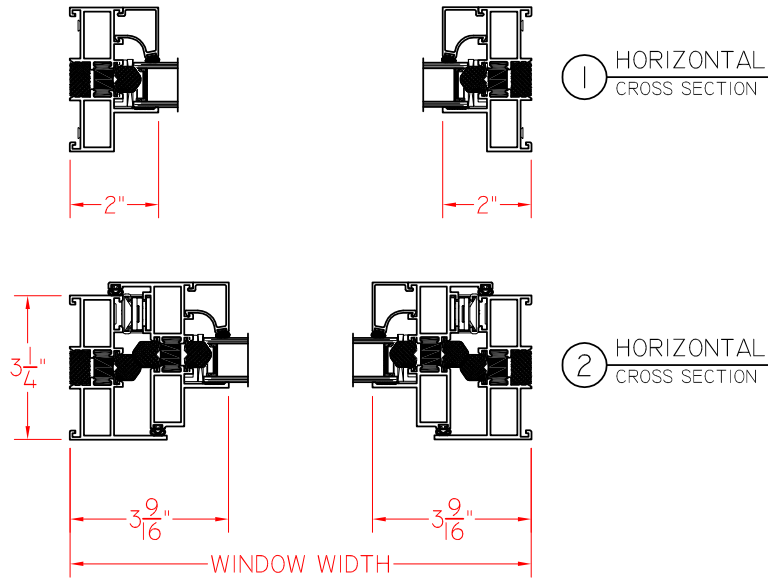




# E600 Series 3 1/4" Frame Depth Project-In (Hopper)

## E600 FIXED/PROJECT-IN (STACKED)

This document contains confidential and proprietary information intended for the private use of Quaker.  
© 2016 Quaker Window Products Co., INC. All rights reserved.  
Quaker reserves the right to change any/all designs without notice. Due to periodic re-certification requirements, result shown may vary.



SCALE 1:4